






## DESCRIPTION

The DrainDroyd filtration system makes high-throughput wax removal from winterized ethanol solutions. It eliminates the frustrating bottleneck of using small scale Buchner funnels for filtration.

The DrainDroyd reduces the number of steps in the overall manufacturing process and supports the production of higher quality extracts.

## FEATURES

-  **High Throughput Filtration**
-  **Includes Containment Vessel for Product Isolation**
-  **GMP-Compliant Stainless-Steel Construction**
-  **Superb Cleanability**
-  **Multiple Accessories to Expand Methods**



*Shown: Standard Filter Top, Collection Vessel & Expeller Nozzle*

## EXTENDED

### FEATURES

- 316 stainless steel construction
- Vacuum pump acceleration filtration
- Collection vessel for product isolation and GMP compliance
- Multiple accessories to expand methods and techniques
- Integrated floor stand

### BENEFITS

- Fastest filtration method in the industry
- Provides superb cleanability and sanitation between batches
- Easy integration into existing processes
- No broken glass or spillage
- Optional Top Configurations: Condenser & Jacketed Filter

### ACCESSORIES

- Octolid for Standard Filter Top
- French Press Lid for Standard Filter Top
- Connect to either a 50Hz or 60Hz Oil-less Vacuum Pump
- Packages of 100 count filter paper in 1.5, 3, 5, 10, and 20 micron sizes
- 3-pack of 10 micron reusable filter bags

## SPECIFICATIONS

General Specifications	
ATTRIBUTE	VALUE
Dimensions (in)	L26 x W26 x H45
Portability	Adjustable height casters
Weight (lbs)	130
Vacuum ("Hg)	27
Vacuum Fittings	KF-25 Connection
Reservoir Volume (L)	150
Collection Volume (gal)	4

Containment System	
ATTRIBUTE	VALUE
Max Pressure (psi)	300
Wetted Materials	Buna-N, 316SS
Surface Finish	16 micro in or better
Temperature Range (°C)	-50 to 100

Installation, Training, Warranty	
ATTRIBUTE	VALUE
<b>Warranty</b>	
Duration (months)	12
Quality and Labor	Parts & workmanship

## OPTIONAL DRAINDROYD TOPS



#70-3011

The Condenser Top for the DrainDroyd is for venting and designed to clean exhaust gases and prevent any possible carryover during the venting process.



#70-3013

The Jacketed Filter Top is fabricated from stainless steel. Jacket ports are quick disconnect for easy fluid connections.

Four ports are provided to provide optional counter current exchange.



#70-3020

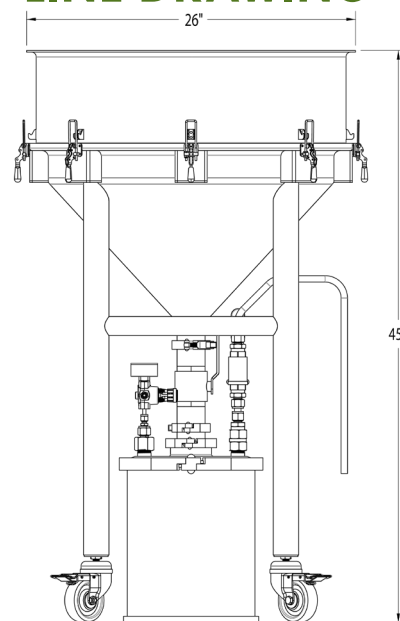
French Press Lid accessory allows the operator to expel liquid from an extracted botanical bed.



#10-1051

The Octo Lid accessory allows up to 3 different process fluids or compressed air to be introduced into the DrainDroyd.

## LINE DRAWING



Standard Filter Top, Collection Vessel & Expeller Nozzle

### SOLD SEPARATELY:

- #70-3127 | 50 Hz Vacuum Pump
- #70-3121 | 60Hz Vacuum Pump
- #70-3011 | Condenser Top only
- #70-3013 | Jacketed Filter Top only
- #70-3001 | Standard Filter Top only

### Accessories to Standard Filter Top:

- #10-1051 | Octolid
- #70-3020 | French Press Lid

### Packages Available:

- #80-9608 | GMP Equip Commissioning & Training
- #80-9606 | GMP Equipment Documentation
- #80-9609 | Maintenance Package (12 months)

## ACCESSORIES for Standard Filter Top

To Order:

**Condenser Top DrainDroyd with Collection Vessel, #10-0169 (208-230/380V)**

**Jacketed Filter Top DrainDroyd with Collection Vessel, #10-0170 (208-230/380V)**

**Standard Filter Top DrainDroyd with Collection Vessel, #70-3010 (208-230/380V)**

Order Filter Paper & Filter Bags: [extraktlab.com/store](http://extraktlab.com/store)



651-600-0036 | [EXTRAKTLAB.COM](http://EXTRAKTLAB.COM)  
500 SIMMON DR. OSCEOLA, WI 54020

